

## SD IP Video Conference Solution

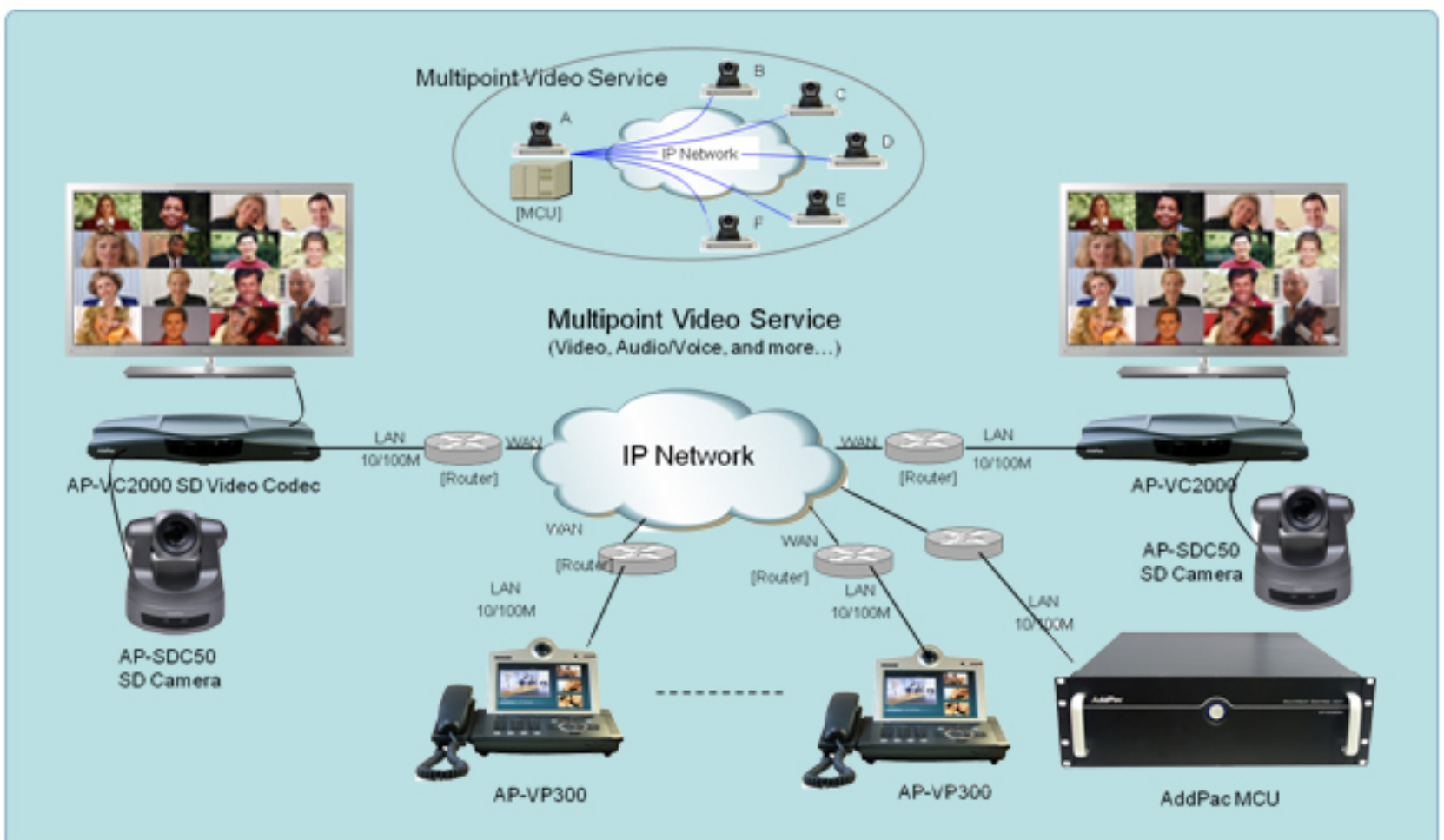


AddPac IP based SD video conferencing devices are an all-in-one high performance IP video communication solution that supports built-in SD camera as well as various video output interface. It is designed on the basis of high performance DSP processor to support the latest audio/video codec, various AV input/output interfaces for video broadcasting as well as video conferencing. AP-SVC700 SD Video Conference Codec supports two channel video interfaces; first channel provides Face-to-Face video conferencing with built-in SD camera and second channel provides various video transmit/receive function such as PC screen transmission, content transmission, and realtime broadcasting. AP-SVC500, AP-SVC200 SD IP Video Conference Codecs support one channel video interface for Face-to-Face video conferencing with built-in SD camera

## SD IP Video Conference Comparison Table

Product		AP-SVC700	AP-SVC500	AP-SVC200
Camera Sensor		CCD	CCD	CCD
Optical Zoom		x27	x27	x27
Codec Video Resolution		SD (D1, VGA)	SD(D1, VGA)	SD(D1, VGA)
Display Video Resolution		HD	HD	HD
Channel One(1)	Video Input	Built-in SD Camera	Built-In SD Camera or Composite	Built-In SD Camera
	Video Output	Composite, Component, HDMI	Composite, Component, HDMI	Composite, Component, HDMI
	Audio Input	Stereo RCA Type	Stereo RCA Type	Stereo RCA Type
	Audio Output	RCA Type Audio (L,R)	RCA Type Audio (L,R)	RCA Type Audio (L,R)
	External PTZ Control	N/A	Support	N/A
Channel Two(2)	Video Input	Composite RCA, RGB, HDMI	N/A	N/A
	Video Output	Composite, Component, HDMI		
	Audio Input	Stereo RCA Type		
	Audio Output	RCA Type Audio (L,R)		
	External PTZ Control	Support		
LAN		One(1) 10/100M Ethernet	One(1) 10/100M Ethernet	One(1) 10/100M Ethernet
Power		External Power Adaptor	External Power Adaptor	External Power Adaptor

## Network Diagram



### AddPac Technology Co.,Ltd.

AddPac Texhnology (Korea-Head Office)

Phone +8225683848

Email sales@addpac.com